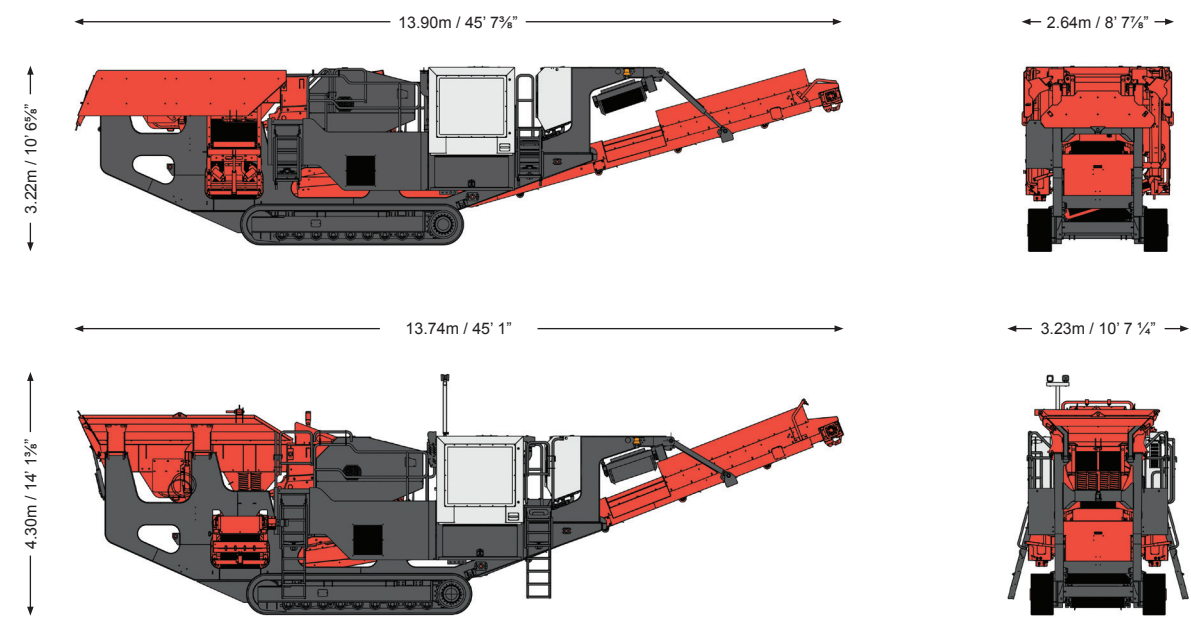


Technical specifications

	QJ241
Crusher	
Type	Single Toggle - C10
Feed Opening	1000mm x 650mm / 40" x 26"
Speed	320 rpm
Adjustment Type	Hyd Wedge
Drive	Hyd via V Belts
CSS Range	50 - 150mm / 2" - 6"

	QJ241
Powerpack	
Engine	Stage 3A / Tier 3 CAT C6.6 Acert or Stage 3B / Tier 4i CAT C7.1 Acert
Engine Power	168 kW / 225 hp
Diesel Tank Capacity	660 litres / 174 US Gal
Hyd Tank Capacity	660 litres / 174 US Gal

Note. All weights and dimensions are for standard units only



Standard transport weight 32,568 kg / 71,800 lbs



SANDVIK CONSTRUCTION MOBILE CRUSHERS AND SCREENS LTD
 HEARTH COTE ROAD, SWADLINCOTE, DERBYSHIRE, DE11 9DU, ENGLAND
 T: +44 (0) 1283 212121 F: +44 (0) 1283 818210 info.mobilecs@sandvik.com www.sandvikmobiles.com

The material in this brochure is of general application for information and guidance only, and no representation or warranty is made or given by the manufacturer that its products will be suitable for a customer's particular purpose and enquiry should always be made of the manufacturer to ensure such suitability. Whilst every effort has been made in the preparation of this document to ensure its accuracy, the manufacturer assumes no liability resulting from errors or omissions in this document, or from the use or interpretation of the information contained herein. The manufacturer reserves the right to make changes to the information in this brochure and the product design without reservation and without notification to users.

QJ241 Mobile Jaw Crusher

E-motion

A world leading jaw crusher



BB-324ENG © Sandvik. Construction 2013 SANDVIK is a registered trademark owned by Sandvik Intellectual Property AB in Sweden and other countries.



QJ241 Mobile Jaw Crusher

Engineering in motion

KEY SPECIFICATIONS

EQUIPMENT	Single toggle C10 jaw crusher
FEED OPENING	1000 x 650 mm / 40" x 26"
OPTIMUM FEED SIZE	520 mm / 21"
ENGINE	C6.6 / C7.1 Acert 168 kW / 225 hp
TRANSPORT DIMENSIONS	13.90m / 45' 7 1/4" (l) 2.64m / 8' 8" (w) 3.22m / 10' 6 3/4" (h)
WEIGHT	32,568 kg / 71,800 lbs

HIGH MOBILITY

The QJ241 is the most compact unit in the world leading series of jaw crushers from Sandvik. Specifically designed for the smaller operation, it can achieve impressive rates of production with excellent reduction ratios.

The machine is equipped with an extended main conveyor which can be hydraulically raised or lowered, making it the ideal solution for rebar clearance in recycling applications.

Although purpose developed for the contractor and recycling markets the crusher is equally productive and suitable for quarry operators seeking easy manoeuvrability and high quality.

OTHER STANDARD FEATURES INCLUDE:

- Emissions compliant 168 kW / 225 hp engine for powerful cost efficient performance
- Automatic central lubrication system to reduce maintenance time
- 50°C ambient temperature capability without the need for a change of oil
- Reverse crushing action to relieve blockages, crush sticky problematic materials and asphalt
- Jaw level sensor available for optimum regulation of material flow into the crusher
- Designed for optimum fuel economy and low operating costs.

Feeder

- Large capacity vibrating variable speed stepped grizzly feeder
- Liner plates fitted as standard
- Improved load control system for the feeder drive to ensure continuous, uninterrupted crushing

Hopper

- Reinforced hopper with hydraulically folding doors for quick setup
- Liner plates fitted as standard

Jaw

- High performing 1000 x 650 mm / 39 1/2" x 26" jaw
- Hydraulically adjustable CSS for a variety of applications
- Reversible crushing action to relieve blockages and for crushing asphalt
- Level sensor fitted to jaw to optimize feed rate into the crusher (optional)

Power Pack

- 168 kW / 225 hp emissions compliant engine
- Easy access to engine compartment for service and maintenance
- Ground level drainage points
- Large capacity 660 litre / 174 US Gal diesel tank

Main Conveyor

- 800 mm / 31 1/2" wide conveyor with a discharge height of 3444 mm / 11' 4"
- Hydraulic raise / lower facility to give increased clearance for rebar discharge in recycling applications
- Tunnel arrangement to reduce catchment points in recycled materials
- Speed wheel fitted to the main conveyor to stop the feeder
- Dust suppression spray bars fitted as standard
- Overband magnet removes rebar for recycling and demolition applications (optional)
- Optional canvas covers

Natural fines conveyor (optional)

- Fitted as standard for removal of fines
- Belt width 650 mm / 25 1/2"

Tracks

- 500 mm / 20" wide tracks driven by umbilical control / radio remote (optional)

Steel pipework (other side of machine)

- Provides a safe and maintenance-free sealing solution, combined with better heat dissipation

Cooling fan

- Hydraulically driven cooling fan with auto reverse to back flush dust from radiator

Control system

- Highly efficient hydraulic and electrical system provides ultimate system control
- User friendly PLC control system with colour screen for full automated control

Chassis

- Heavy duty fabricated chassis on a tracked frame



Suitable for a wide variety of applications.



Quarrying application

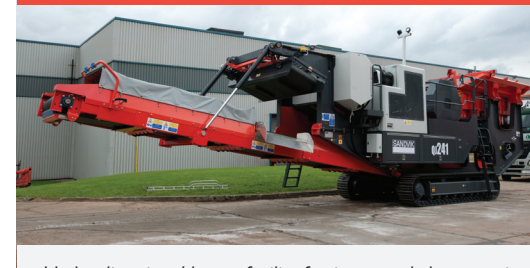


Recycling application



Construction application

STANDARD FEATURES



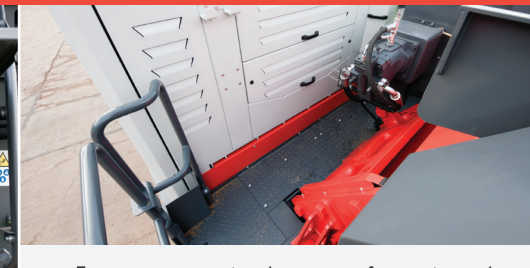
Hydraulic raise / lower facility for increased clearance in recycling applications



User friendly PLC control system with colour screen



Steel pipework for better heat dissipation



Easy access to engine department for service and maintenance



Hydraulically driven cooling fan



Extended main conveyor for massive stockpiling capabilities