



BP1200-9TB

Mobile Blending Plant



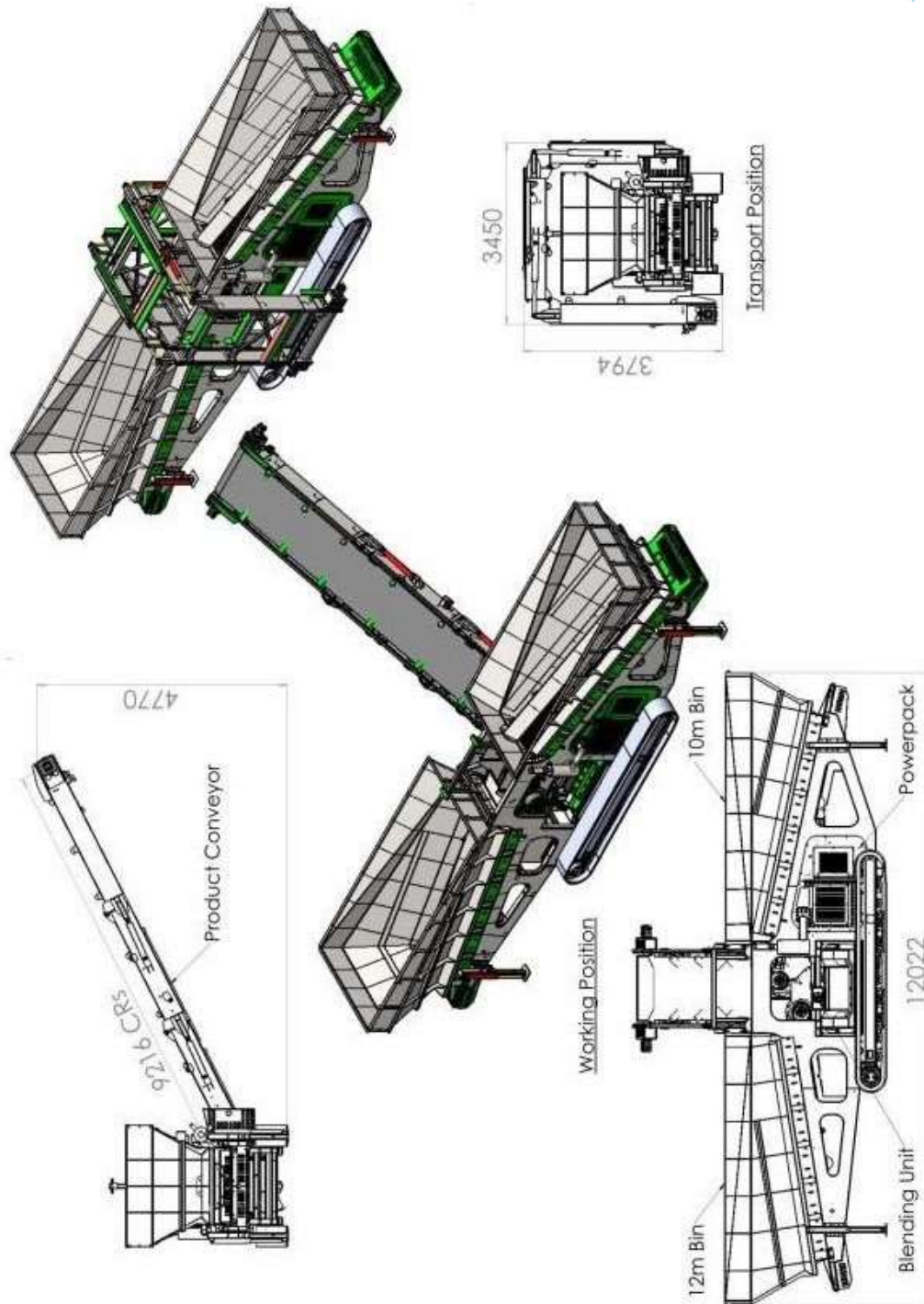
SEARCH

IMS TRACK BLENDING PLANT

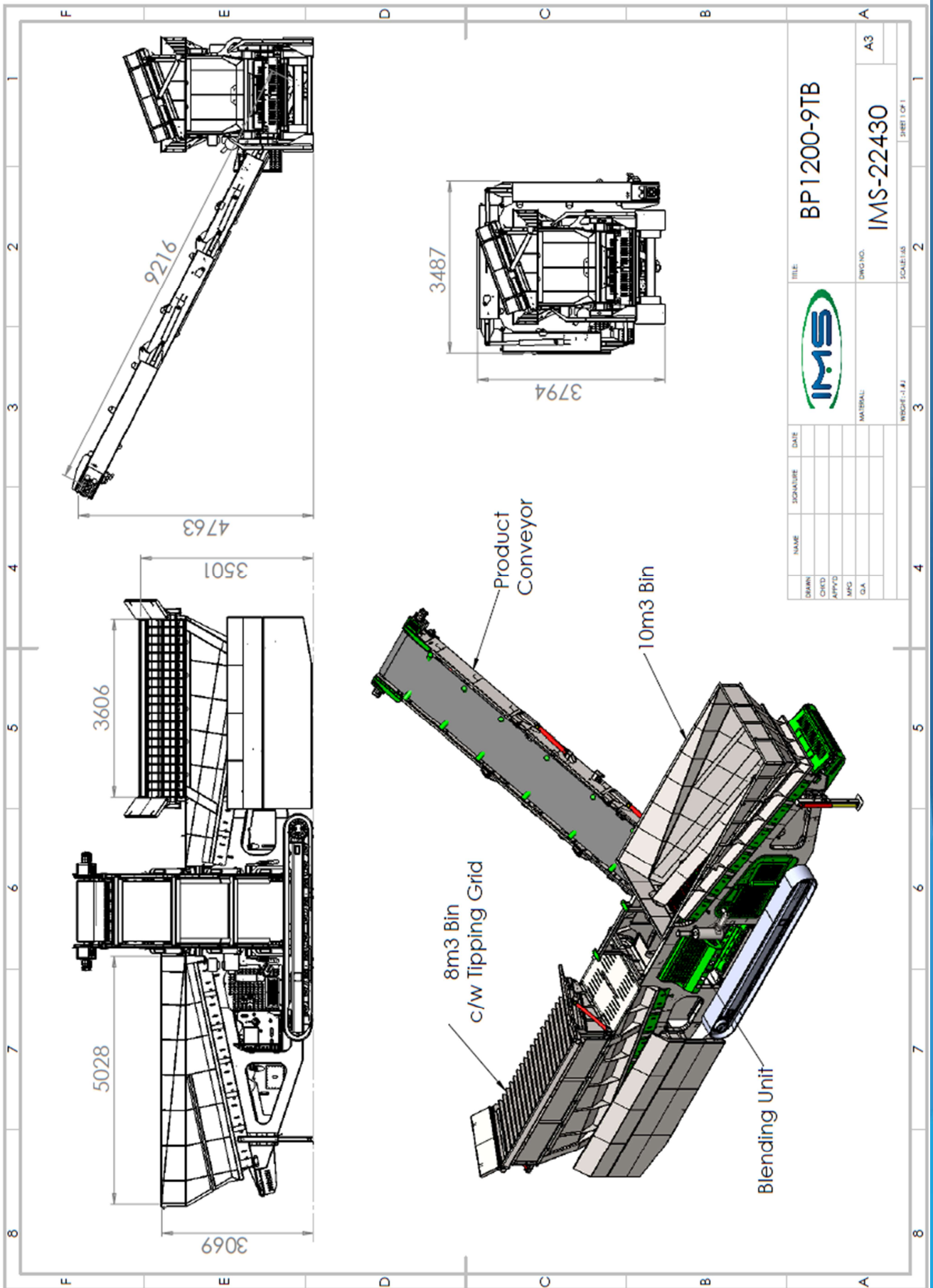




The BP1200-9TB Mobile Blender has been developed by IMS to meet the many applications where blending of material is essential. It can be used in applications where high volumes are required and is capable of producing up to 1000tph of blended material. Where more refined mixing is required, the unit is equipped with a mixing chamber with rotating mixer shaft to thoroughly blend mulch, topsoil, sand, etc. for use in lawn development, golf courses, and similar applications



Tipping Grid Option



DESIGNER	NAME	SIGNATURE	DATE	TITLE	BP1200-9TB
CHECKED				DWG NO.	IMS-22430
APPROVED				MATERIAL	A3
MFC				SCALE	1:1
DIA				WORKSHEET NO.	2
				SHEET OF 1	1



Feed Hoppers

12cbm and 10cbm capacity feed hoppers located adjacent to each other to accept material from loading shovels. Hoppers fitted with 1000mm wide belt feeders placed strategically to allow discharge from 10cbm hopper to feed directly on top of discharge from 12cbm hopper. Both Feeder Belts equipped with variable speed control to allow operator to define material ratio from each bin.

Undercarriage

The undercarriage consists of a robust modular type chassis fitted with 4500mm long crawler tracks. 4 No. Hydraulically operated support legs are provided to the 4 corners of the chassis to ensure stability when operational

Discharge Conveyor

1200mm wide x 9.2m long Discharge Conveyor capable of handling up to 1000tph of blended material. Conveyor fitted with heavy duty chevron belt and driven with 2 OMV630 hydraulic motors

Power Unit

Unit powered by a Diesel Engine with multiple hydraulic pumps to provide oil flow for the various functions. Power unit is adequately enclosed in suitable canopy with oil cooler and airflow to control the temperature inside the enclosure. Diesel and hydraulic tanks located adjacent to the Power Unit

Mixer/Shredder Unit

A hydraulic operated single shaft Mixer/Shredder unit is located centrally to accept the discharge from both feeders. This Mixer/Shredder is used when more refined mixing is required but can be moved out of line by hydraulic cylinder when large volume output is required

Controls

All the controls are centrally located and are easy accessible for the operator. The controls include the Engine Starter Panel, the solenoid engagement switches, the manual controls for the hydraulic cylinders, and flow control operation.

Emergency Stop System

Every BP1200-9TB track Conveyor is equipped from the factory with an emergency stop system that will render the plant inoperable when activated, providing added safety for the operator



Standard Features

12m³ and 10m³ Feed Hoppers

Variable Speed Belt Feeders

Crawler Track Movement

75kw Diesel Hydraulic Power Unit Engine

1200mm (48") wide Discharge Conveyor

Hydraulic Folding of Conveyor for Transport

Hydraulic Support Legs for Operational Stability

Ultrasonic Run Empty Sensor, Flashing Beacon System

Pull Cord Emergency Stops



Options

Hydraulic Tipping Grid

Dust Covers over Discharge Conveyor

Belt Scales on Product Conveyor

Hardox Wareplates in Hoppers

Remote Stop/Start





Specifications

Operational length	12.02M (40')
Operational height	4.77M (15' 8")
Loading height	3.1M (10' 2")
Hydraulic tank capacity	650 l (143 gallon)
Diesel fuel capacity	450l (100 gallon)
Engine	Caterpillar four cylinder liquid cooled
Transport width	3.45M (11' 4")
Transport height	3.8 M (12' 5")
Transport length	12.02M (40')
Total weight	19400 kgs (42770 lbs)



Due to Irish Manufacturing Services Limited's policy of continuing product improvements, Specifications are subject to change without notice or obligation. No representation is made that the products depicted herein comply with any laws, codes, rules, regulations or standards. Compliance is the responsibility of the user. Additional safety equipment may be required by the particular location and application of product.

Irish Manufacturing Services Limited

34 Dunroe Road, Clogher, Co. Tyrone, N. Ireland BT76 0DZ

Tel. +44 (0)28 8554 9656 E-mail info@ims-ltd.ie website; www.ims-ltd.ie