



ULTRAMAX[®] 1200-CV

This highly portable impactor plant is one of the most durable, reliable, and versatile plants for your medium-sized jobs.

PRIMARY FEATURES

- » Easily transports in one pull. Check with your DOT.
- 1 Optional electro-magnet is available as a cross-belt or in-line installation that stays on for transport.
- » Hydraulic lift and leveling system enables quick set up and tear down by using the hydraulic run-on legs.
- 2 Totally self-contained, reliable diesel/ electric or all-electric power. You won't have to worry about hydraulic leaks and failures shutting you down.
- » Features the industry's only LIFETIME ROTOR WARRANTY on its solid-steel, three-bar, sculptured rotor—the industry's heaviest—to keep you up and crushing.*

* North America only.



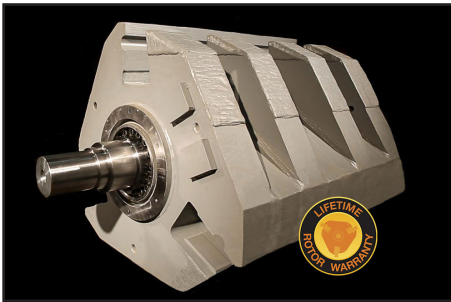
ADDITIONAL FEATURES

- » Replaces dual crusher systems for a much lower initial investment and for greatly reduced maintenance, fuel and transportation costs.
- » Features standard grizzly bypass chute and available cross-belt conveyor with flop gate to allow for either removal of the material that passes through the grizzly deck for stockpiling or blending back with the crushed material.
- » Features unique two-step, 5' grizzly deck to remove fines before crushing.
- » Utilizes side-discharge conveyor (OC model) with receiving hopper and replaceable liners, optional full-length skirtboards and available, in-line electro-magnet that stays on for trailer transport.
- » Side-discharge conveyor (OC model) is available in road-portable version.
- » Includes removable electrical control panel featuring pre-wired receptacles for radial stackers.
- » Manage the feeder speed for complete control of the flow of material into the impactor with Variable Frequency Drive (VFD).
- » Includes wireless remote control for the feeder shutdown and all motor stop.



ULTRAMAX® 1200-CV

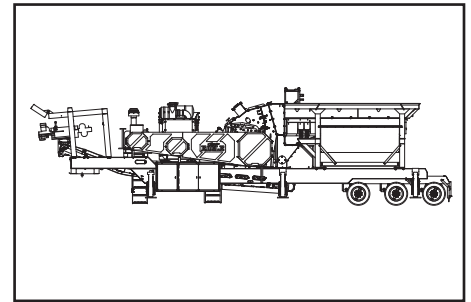
CV model is featured. The 1200-25 is also available as an open circuit (OC) model.



Solid-steel, three-bar, sculptured rotor with LIFETIME ROTOR WARRANTY, North America only.



Easy, one-pull transport. Check with your DOT.



1200-25 CV PORTABLE IMPACTOR PLANT TECHNICAL SPECIFICATIONS*

Model	
Impactor	UM-25
Operating Length	52' 0" / 15.9M
Gross Weight	96000lbs / 43500kg
Travel Length	48' 10" / 14.9M
Travel Width	11' 11" / 3.6M
Travel Height	13' 5" / 4.1M
Feed Hopper Capacity	17yd ³ / 13.0M ³
Feed Hopper Capacity (Tons)	23.0T / 20.9MT
Vibrating Feeder	18' x 45.5" / 5.5M x 1.2M
Feeder Grizzly Deck	60" long 2 step / 1524mm 2 step
On-Plant Power Supply Diesel	450HP / 335kW diesel engine and 140kW generator or
On-Plant Power Supply Electric	300HP / 224kW all-electric power
Discharge Conveyor Width	42" / 1067mm
Discharge Conveyor Height	8' 6.5" / 2600mm

ULTRAMAX® IMPACTOR MODEL AND SPECIFICATIONS*

Model	Diameter x Width		Width x Height		Approx. Weight (lbs / kg)	Rotor Weight (lbs / kg)	Production Capacity**
	Rotor (Inches / Millimeters)	Feed Opening (Inches / Millimeters)	Power Required (HP / kW)				
UM-25	47 x 47 / 1194 x 1194	48 x 34 / 1219 x 864	150 - 300 / 112 - 224		34000 / 15400	13000 / 5900	Varies by application.

*Design specifications subject to change without notice.

**Contact your Eagle Sales Representative with your specific application for anticipated production capacity.

Call 800-25-EAGLE (800-253-2453) or visit www.EagleCrusher.com
 P.O. Box 537, Galion, OH 44833 • 419-468-2288 • fax: 419-468-4840 • email: sales@eaglecrusher.com

Rev 06/2020

EAGLE CRUSHER®

©2020 Eagle Crusher Company, Inc.